

FleeTech™

An Advanced Fleet Management ERP



LEMON™
TECHNOLOGIES

Helping You Achieve Your Goals





LEMON™

Group Profile



Leading consulting & technology group specialized in providing a host of value added services to manufacturing and service Industry worldwide. The group is based out of India having direct offices in Dubai and Hong Kong.

Part of RSM International and RSM India, the 6th largest accounting-consulting groups globally and in India respectively.



LEMON™

Group Companies

Lemon Technologies Pvt. Ltd

Lemon Consultech India

Lemon Funds LLP



Lemon Consultech DMCC

Lemon Consultech HK Ltd.

Lemon Technomist Pvt. Ltd.



LEMON™

Our Strengths

Multi-disciplinary team of Software developers, Application developers, IT Engineers and other professionals



Specialized in providing host of value added IT consulting & professional IT services

Technology team of 200+ personnel



Expertise in MySQL, MVC, ASP.Net, PHP, Node JS, Python, SAP BI & hana, Android, iOS and other latest technologies

Clients include companies from the G&J and other manufacturing & service industry worldwide



Offer creative and innovative solutions to solve business problems



LEMON™

Vision & Mission

To offer innovative and creative services for the beneciation of our customers worldwide such that our services enable them to transform the way in which they do business.

Vision



Mission

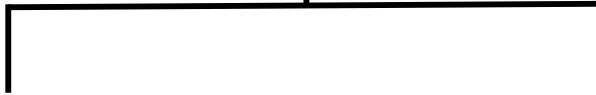
To deliver excellence in all our services to enable our esteem customers to excel in their own business. We do this by providing value-added services leveraging our vast domain knowledge, blending of IT with various business domains, specialized multi disciplinary skills and international professional expertise





LEMON™

Awards & Accolades



Lemon Technologies:

'Most Innovative IT
Company'

by GJTCl for 2014-15 in
Ahmedabad

Lemon Technomist:

Awarded the 'Most
Innovative Company' by
GJEPC for 2014-15,
2016-17 and 2018-19.

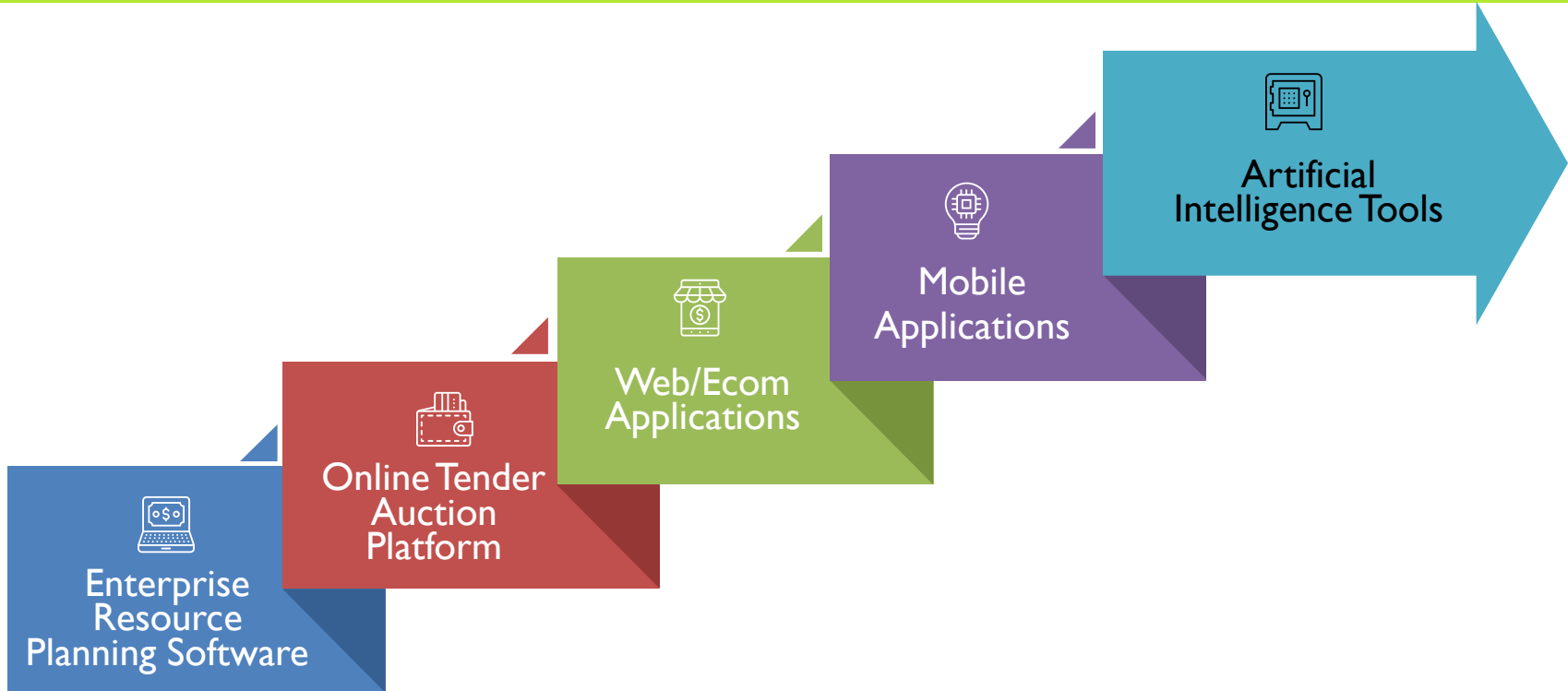


Both these companies appear in the list of Top 100 Companies by “The New Jeweller Magazine”



LEMON™

Our Technology Bouquet



FLEETECH SOLUTION



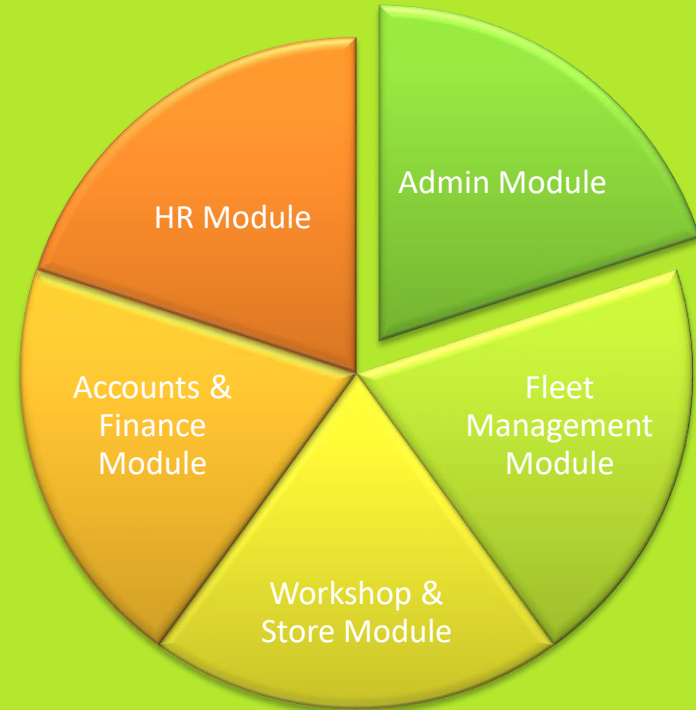
LEMON™
TECHNOLOGIES



LEMON™

Fleet Management ERP Modules

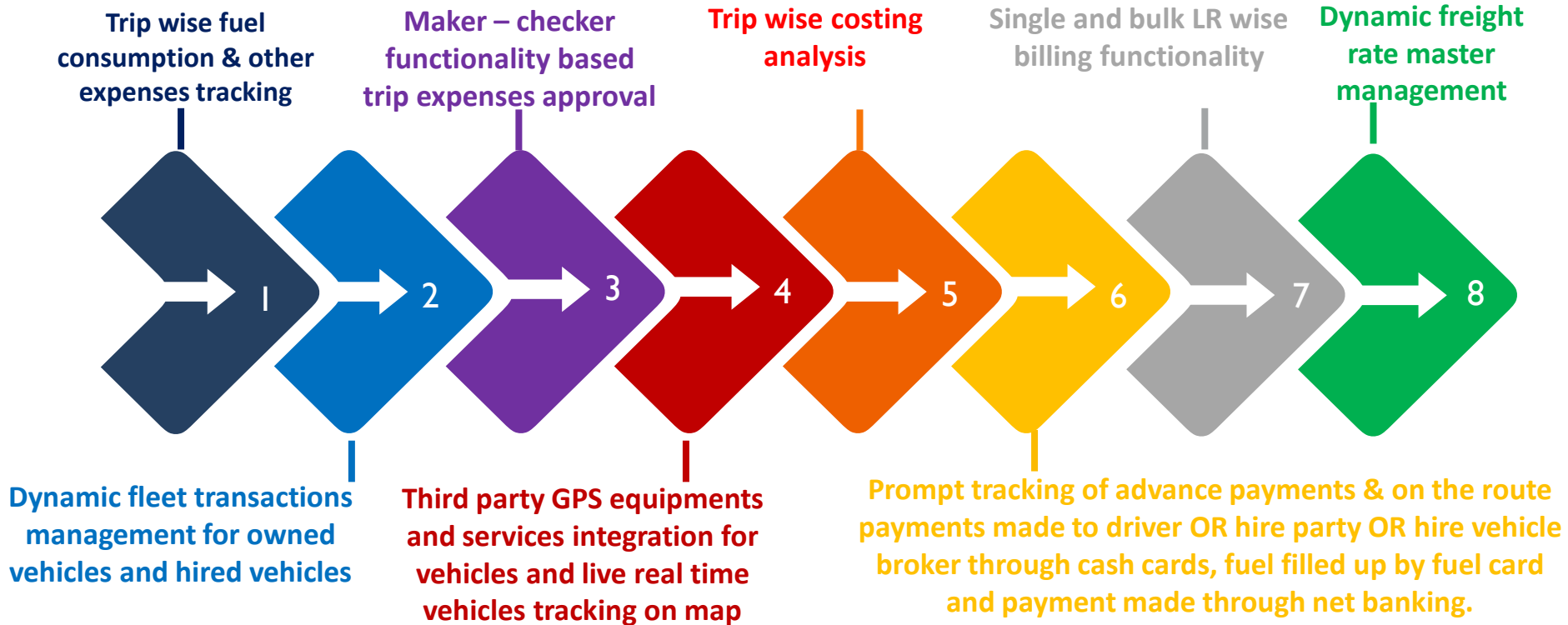
- **Admin module**
Handles software administration, access controls, permissions management, & company structure defining.
- **Fleet Management Module**
Manage own & hired fleet transactions and operations and allied transaction & master level information and data
- **Workshop & Store Module**
Manage workshop and store transactions and operations and allied transaction & master level information and data
- **Accounts & Finance Module**
Complete accounts & finance module.
- **HR Module**
Employees related transactions management like attendance, payroll generation, driver – vehicle assignment, salary & other pay management and documentation etc.





LEMON™

Fleet Management





LEMON™

Fleet Management

- Main trip – sub trip concept to track multiple smaller trips within one round trip
- Toll tax / Fastag payment auto-reconciliation to identify double toll tax incidents
- Auto capturing DO and LR by:
 - ✓ Third party API integration and / or
 - ✓ OCR based PDF document reader and / or
 - ✓ Excel upload utility
- Vehicle wise, vehicle type wise, make wise and model wise analytical screen reports like
 - ✓ Profitability analysis
 - ✓ Expenses analysis
 - ✓ Kilometers run vs. fuel consumption & fuel average analysis
 - ✓ Projection vs. actual billing and expenses analysis

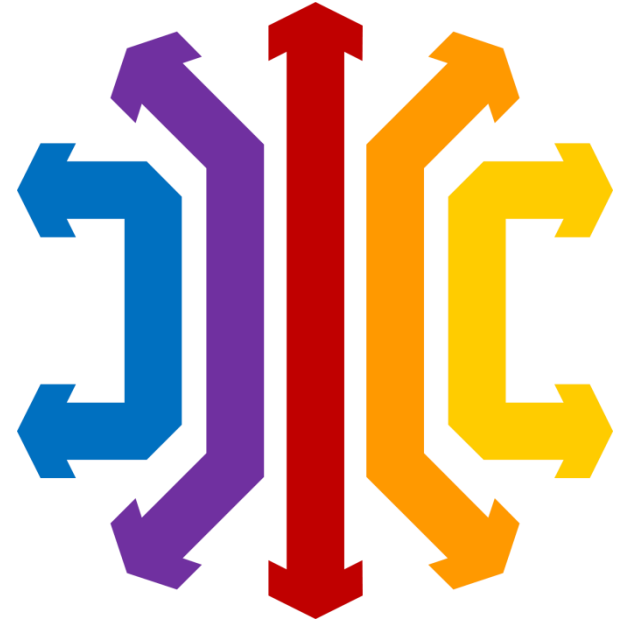




LEMON™

Workshop Management

- End to end workshop operations management
- Auto Jobsheet creation through RFID/NFC integration and / or Geo fencing
- Pre-defined PMS check points configuration
- Multiple mode Jobsheet creation options
- Technician / Mechanic Jobsheet inputs tracking & analysis
- Dynamic maintenance points categorization facility
- Jobsheet linked spare parts issue
- On route incident recording, tracking and handling facility
- GPS location based Jobsheet creation option to handle accident / incident happened at remote place





LEMON™

Store Management

- End to end store management incl. store procurement, issue, replacement, returns and scrap management
- Barcode / QR code based spare parts inventory tracking
- Advanced stock management through re-order level, maximum stock level etc.
- Tyre management facility
 - ✓ RFID / NFC tagging to tyre
 - ✓ Tyre life cycle history management and tracking through tyre status management like captive tyre, new tyre, under inspection, remolded, stepney, under claim, and scrap.
 - ✓ Vehicle wise tyre inventory tracking
 - ✓ Make, Brand and Model wise tyre life analysis (in kilometers and years) and tyre expenses & profitability analysis

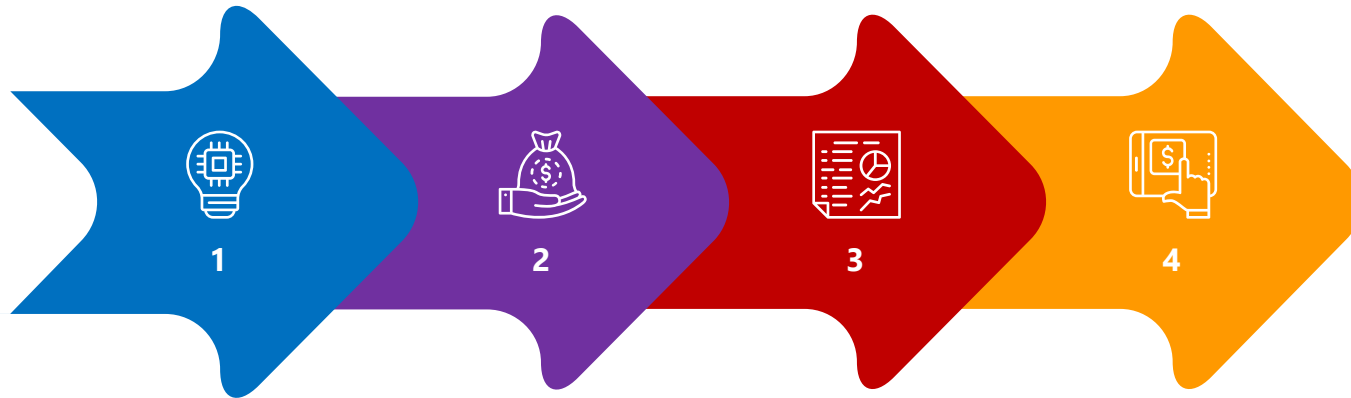




LEMON™

Store Management

Battery management facility



**RFID / NFC
tagging to
batteries**

**Battery life cycle history
management and tracking through
status management like captive or
new battery, under inspection,
repaired, under claim and scrap**

**Vehicle
wise
battery
inventory
tracking**

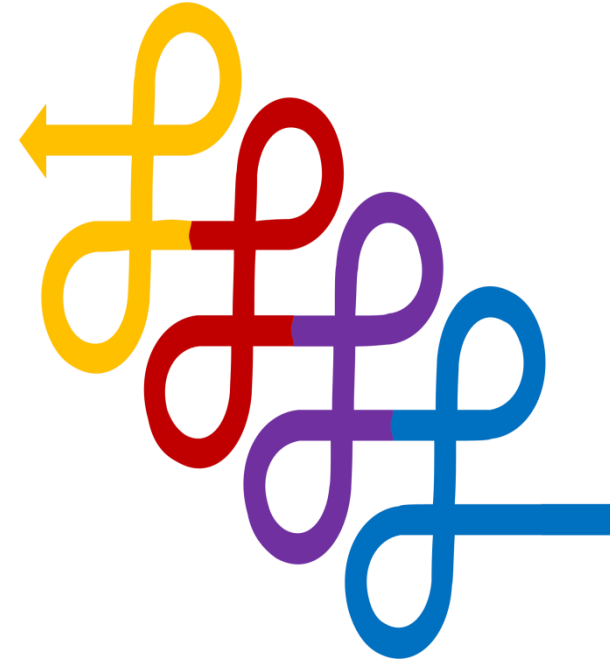
**Make, Brand and Model wise
battery life analysis (in kilometers
and years) and battery expenses
& profitability analysis**



LEMON™

HR Management

- Complete attendance and payroll processing
 - ✓ Office staff and vehicle drivers' attendance, payroll processing and salary and wages payment
 - ✓ Advance payment and ledger tracking for office staff and vehicle drivers
 - ✓ Auto payroll generation by integrating with attendance data
- Accurate compliances management
 - ✓ All Statutory compliances covered like PF, ESIC, Gratuity, Bonus & TDS
- Employee Self Service (ESS)
 - ✓ Employees login and log out through mobile application and / or biometric device
 - ✓ Trip check in and check out by driver
 - ✓ Trip expenses upload by driver through mobile application





LEMON™

HR Reports

- Transactional and other document / report generation -
 - ✓ Pay-Slip
 - ✓ Attendance Register
 - ✓ Salary Sheet
 - ✓ Appointment Letters (Gujarati, Hindi, English and other required language Format)
 - ✓ Resign Letter
 - ✓ Leave Application
 - ✓ Increment Letter
 - ✓ Clearance Certificate





LEMON™

Accounts & Finance

- Complete accounting and finance management
- Invoicing
 - ✓ Single and / or multiple LR wise and dynamic freight rate master based invoicing
 - ✓ Auto consideration of reimbursable expenses paid to hired vehicle while preparing invoice for the same to billing party
- Trip wise direct expenses tracking of drivers payment OR payment to hire party and respective driver and hire party ledger maintenance and approval based auto entry configuration
- Store procurement tracking and payment
- Payroll process integration and employee salary payment process entries and employee ledger maintaining

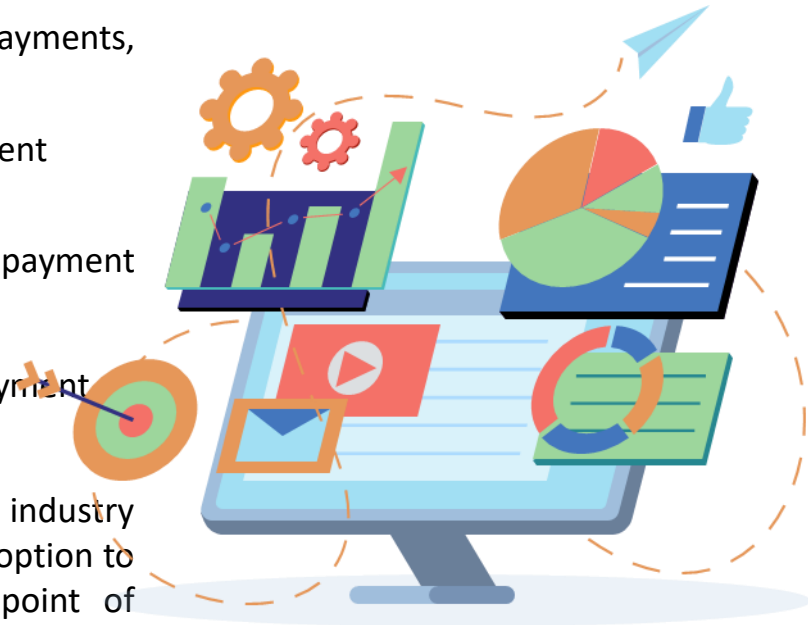




LEMON™

Accounts & Finance

- General accounting
 - ✓ All standard transactions like Cash or Bank Receipts & Payments, JV, Contra entry etc
 - ✓ Branch wise and centralized cash & bank book management
- Transactional Taxation
 - ✓ TCS - Check TCS eligibility and calculation while making payment to type, parts etc. vendors
 - ✓ TDS- Check TDS eligibility and liability while making payment any contract vendors like mechanics
 - ✓ GST - Though GST is mostly not applicable to transport industry directly and is levied on reverse charge basis, there is an option to integrate GST master at point of invoicing and at point of procurement so as to generate raw reports for GST charged on outward and inward as and when may be required in future





LEMON™

Automation through RPA BOTs

- GST bot integration for:
 - ✓ Automation of e-invoicing & web view of IRN no., Ack no., Invoice and QR code against each invoice
 - ✓ Auto capture e-way bill requirement and generation
 - ✓ GSTR 2A to GSTR 3B auto reconciliation
 - ✓ Non-compliant party notification at the time of payment to vendors
 - ✓ Multi GSTIN reconciliation for GSTR 2A vs. GSTR 3b for a single company





LEMON™

Accounts & Finance

- TDS/TCS auto reconciliation
- GST reports for monthly and / or quarterly filling of GSTR 3B and GSTR 1
- E-way bill generation from ERP itself by integration with GST portal
- Cash flow and funds flow projection and management
- Facility to create monthly, quarterly and annually projected profit and loss and balance sheet and compare the same with actual achieved profit and loss and balance sheet
- Auto entry feature for recurring and same amount entries for incomes and expenses
- Schedule III balance sheet





LEMON™

MIS - Reports



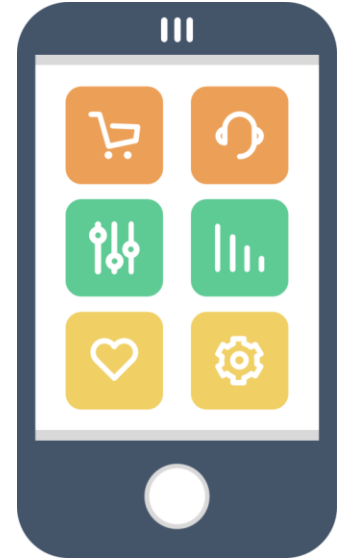
- Vehicle wise profitability analysis and bifurcation between own vehicle and hired vehicle profitability analysis and comparison
- Month wise Profitability analysis
- Branch wise profitability analysis
- Hire party and hired vehicle wise profitability analysis
- Tyre brand and model wise tyre life cycle analysis
- Battery brand and model wise battery life cycle analysis
- Vehicle make, type and model wise vehicle profitability analysis



LEMON™

Mobile Application

- Filling up of pre-defined checklist and expenses information by authorized person at the time of initiating trip along with respective file attachment. For eg.
 - ✓ Trip, Driver and Vehicle documentation checklist
 - ✓ Material wise checklist for materials defined in LR / Sub trip / LHR
 - ✓ Recording of advance cash and / or diesel given to driver against trip sheet / main trip along with an option to attach supporting document
- Drivers attendance
 - ✓ Mobile app with simple UI having only touch based inputs by driver
 - ✓ Trip check-in and trip check-out by driver on single touch
 - ✓ Feature to store info without internet and sync with server when mobile gets internet
 - ✓ Enter daily expenses and attach supportive documents like voucher and bills etc.

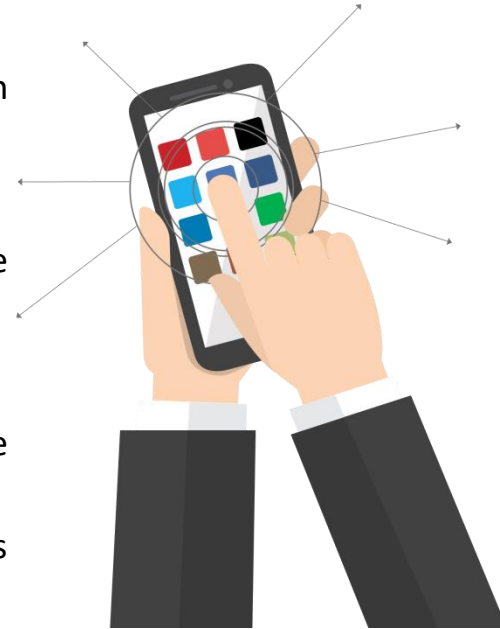




LEMON™

Mobile Application

- Close and acknowledge trip by authorized persons through mobile app along with option to attach supporting documents / files / images which can enable -
 - ✓ Appointing single person even at remote places and to have mobile branch in place of full-fledged branch for handling limited actions and transactions
 - ✓ Avoid the cost of establishing branches and computer infrastructure
 - ✓ Scan the respective LR's QR code to close the LR and sub trip / hired vehicle trip without any manual data entry
- Use of mobile app in various workshop operations like:
 - ✓ Category wise 'issue' reporting by technician by attaching photos for the same
 - ✓ Filling up Pre-defined PMS checklist points and reporting respective findings on the same
 - ✓ Jobsheet allotment notification to assigned technician and work tracking on the same





LEMON™

IOT Integration

- IOT based sensors and / or third party equipments may get integrated like
 - ✓ IOT sensor integration to track the diesel consumption pattern and to report any exceptional and sudden rise in diesel consumption so as to get control over diesel theft
 - ✓ IOT devices integration to get information about air pressure, oil level, engine heat and such kind of traceable and vehicle's health-oriented checkpoints and be timely notified on real time basis about any malfunctions in the same so as to take appropriate timely actions on the same
 - ✓ Weigh bridge/scale integration so as to get accurate weight at loading and unloading point without human intervention and to avoid the potential human errors

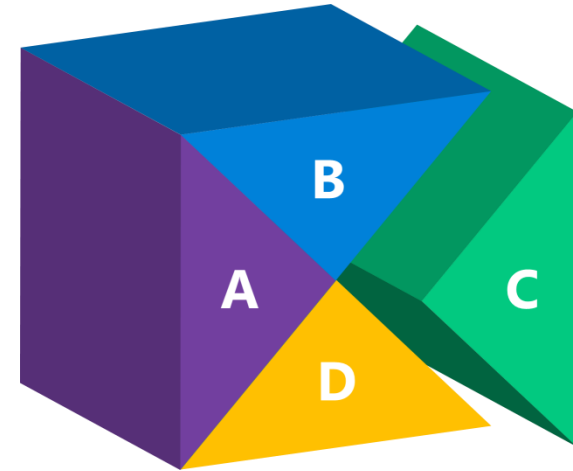




LEMON™

AI (Artificial Intelligence)

- Auto plan and / or suggest the vehicle against DO on the basis of algorithm run on various parameters like
 - ✓ Vehicle availability
 - ✓ Order credentials like consignee, consignor, material, from location, to location, proposed load etc.
 - ✓ Most beneficial hire party in case of hire vehicles on the basis of past transactions
- Estimated transit time calculation by integration with google map location services
- Trip wise estimated diesel consumption calculation on the basis of estimated kms and the existing diesel rate

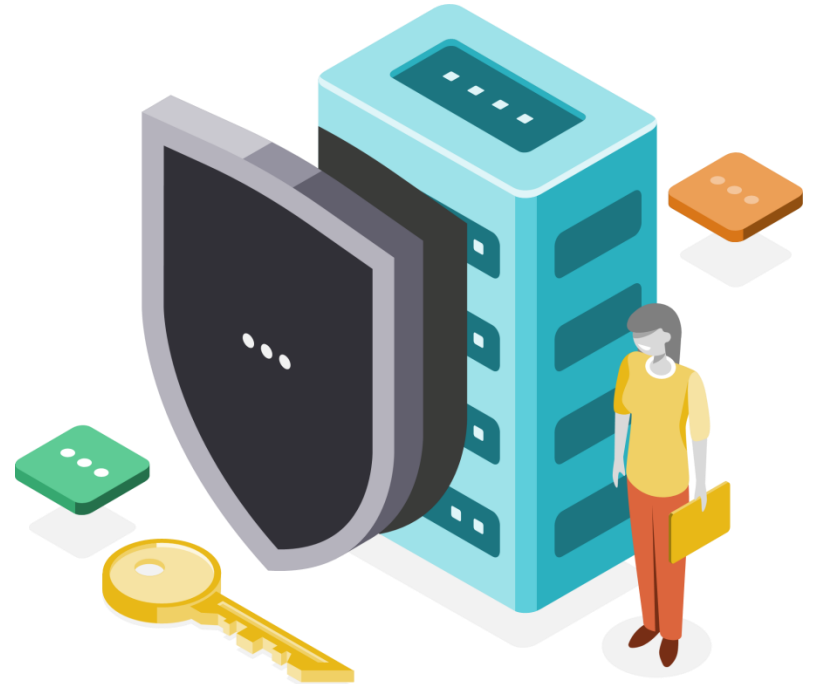




LEMON™

Access controls & Security

- Access controls & Security
 - ✓ Web based accessibility
 - ✓ Access control by binding IP address and MAC id of computer and / or laptop device so as to restrict the access to only those IP and / or MAC id which are allowed to access
 - ✓ Time bound access control by defining accessible timing for the software for each and every registered IP and / or MAC and seek a permission to get access beyond the defined time frame
 - ✓ User and role wise flexible access permission management for giving access on software forms to users



Transactions authentication & Verification



- Transactions authentication & Verification

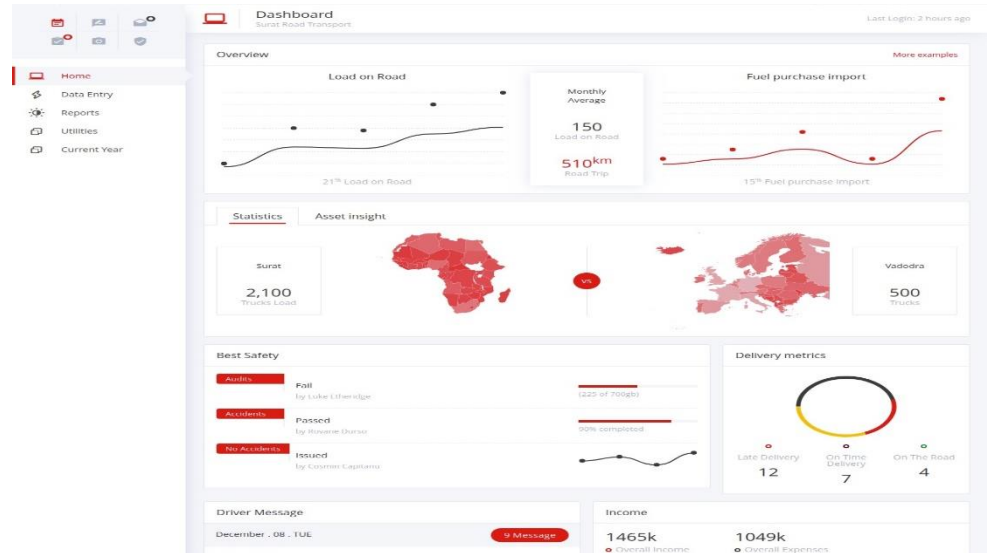
- ✓ Maker – checker functionality based transaction approval facility
- ✓ Facility to approve transactions through attaching Digital Signature Certificate (DSC)
- ✓ Accounting, inventory, HR & general ledger masters management and authentication controls
- ✓ Documents / images / file upload utility at transaction level wherever there is a requirement to upload supporting documents / images / file for respective transaction
- ✓ Maintain each and every transaction trail history for add, edit, and delete of respective transaction and document upload, modification, replacing and deletion for respective transaction.





LEMON™

State of the art User Interface (UI)





LEMON™

State of the art User Interface (UI)

☰

🔔
👤

Katy Perry

📅
✉️
📧

📧
📷
🛡️

🏠 Home
🔗 Data Entry
📊 Reports
📁 Utilities
📅 Current Year

🚚

Truck Data Entry

Surat Road Transport

Last Login: 2 hours ago

All Loads

Current Loads

Scheduled Loads

+ Build a New Load
 ↓ View Load Reports

All Loads
+ Add New

Loads	Status	Pickup	Destinati on	Delivery date	Stop	Carrier	Equipme nt	Custome r	Income	Expenses	Distance	Driver	Truck Status Info	Actions
4004	Dispatche d	Surat	Vadodra	2021/04/ 25	1	XPO	Lowbed	Raj Shah	2500	1900	340 km	Jagat Tiwari	Not Set	👕 🗑️
4004	Dispatche d	Surat	Vadodra	2021/04/ 25	1	XPO	Lowbed	Raj Shah	2500	1900	340 km	Jagat Tiwari	Not Set	👕 🗑️
4004	Dispatche d	Surat	Vadodra	2021/04/ 25	1	XPO	Lowbed	Raj Shah	2500	1900	340 km	Jagat Tiwari	Not Set	👕 🗑️
4004	Dispatche d	Surat	Vadodra	2021/04/ 25	1	XPO	Lowbed	Raj Shah	2500	1900	340 km	Jagat Tiwari	Not Set	👕 🗑️
4004	Dispatche d	Surat	Vadodra	2021/04/ 25	1	XPO	Lowbed	Raj Shah	2500	1900	340 km	Jagat Tiwari	Not Set	👕 🗑️

Thank You

Helping You Achieve Your Goals



LEMON™

TECHNOLOGIES

Contact : +91 90992 08000 / 80008 28499

Email : sales@lemontechnologies.net